

Bestway



20 | CATALOG
20 | COLLECTION

VISION ^{OUR} **MISSION**

We create fun, lasting experiences to everyone in the world through the products and service we provide.

Happiness —
Happy Consumers,
Happy Employees,
Happy World



Vertically integrated



Customer focused



Innovative



Sustainable



Consumer driven



Fully owned production facilities



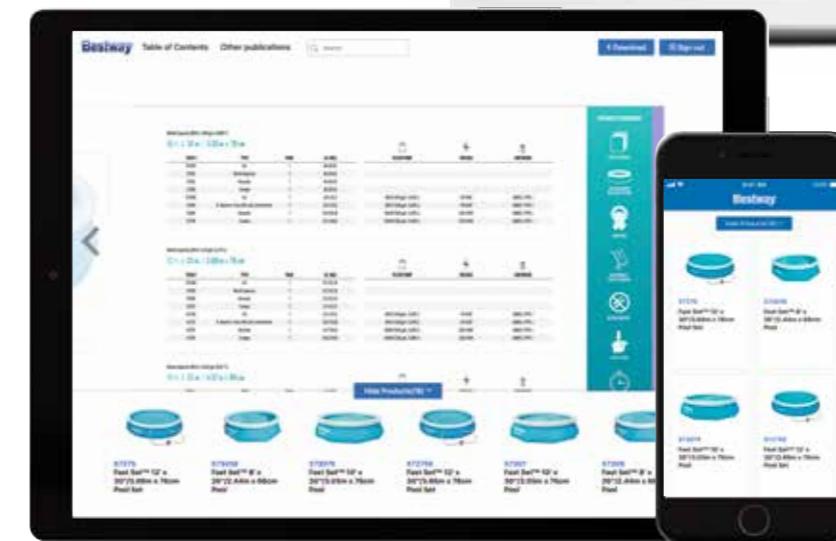
Public stock exchange

BESTWAY WORLD



THE NEW WEBSITE

Bestwaycorp.com is debuting a new and improved look. Keeping it fresh and modern, our new website uses large visuals and graphics to help tell the story of each brand. Now it's easier than ever to learn about our different products and technologies!



THE NEW CATALOG APP

Easily access all of our Bestway® catalogs while on the go with our brand new app. Download to see the conveniently portable, digital versions of our catalogs!

LICENSE

2020 COLLECTION

ICONS



Handles



Target Age



Sunshade



Mesh



Playballs



Blower



Built-in Pump



Mult-color Lights



New Item



FISHER
PRICE

Fisher-Price

10



MICKEY

Disney
JUNIOR
MICKEY

24



MINNIE

MINNIE

32



MINNIE
MOUSE

Disney
MINNIE
MOUSE

38



DISNEY
PRINCESS

Disney
PRINCESS

42



SPIDER-MAN

Marvel
SPIDER-MAN

48

Fisher-Price™

READY
FOR
THIS!

FISHER-PRICE™ and associated trademarks are owned by Mattel and used under license from Mattel Europa B.V. © 2019 Mattel. All Rights Reserved.

I N D O O R



O U T D O O R



FISHER-PRICE™ and associated trademarks are owned by Mattel and used under license from Mattel Europa B.V. © 2019 Mattel. All Rights Reserved.

READY
FOR
THIS!

Fisher-Price™

93523
Girls' Float Suit

- Comfortable knitted fabric
- Built-in foam pads
- Skirt accent for girls
- Attractive graphic design
- Tested buoyancy
- Durable, auto-lock zipper with flap protection when closed
- Hanging card
- Weight capacity: S/M 11-18 kg (24-40 lbs); M/L 18-30 kg (40-66 lbs)
- 4 units in S/M size; 2 units in M/L size
- 6 Ea., 2.0 kg (4.5 lbs)



93524
Boys' Float Suit

- One piece suit constructed with comfortable knitted fabric
- Built-in foam pads
- Attractive graphic design
- Tested buoyancy
- Durable, auto-lock zipper with flap protection when closed
- Hanging card
- Weight capacity: S/M 11-18 kg (24-40 lbs); M/L 18-30 kg (40-66 lbs)
- 4 units in S/M size; 2 units in M/L size
- 6 Ea., 1.8 kg (4.1 lbs)



93508
Fabric Kickboard

- 42 cm x 32 cm x 3.5 cm / 16.5" x 13" x 1.4"
- Attractive graphic design
- Sleek ergonomic design streamlines through the water
- Wrapped with printed fabric for comfortable grip
- Shrink wrapped with insert card
- Weight capacity: 18-30 kg (40-66 lbs)
- 12 Ea., 1.5 kg (3.4 lbs)

93530

Swim Pal Dump Bin

- 95.8 cm x 42.8 cm x 1.06 m / 37.7" x 16.9" x 41.7"
- Includes: 40 pcs (93522 Swim Pal)
- 1 Set, 21.3 kg (46.9 lbs)

3/6+

M/L



93522

Swim Pal

- Innovative structure design
- Adjustable straps create a snug fit and keep kids secure
- Durable oxford fabric
- Built-in foam pads
- Attractive graphic design
- Tested buoyancy
- Hanging card
- Weight capacity: 18-30 kg (40-66 lbs)
- 8 Ea., 4.2 kg (9.2 lbs)

3/6+

M/L



93521

Foam Trainer Vest

- Vest constructed of comfortable knit fabric
- Built-in foam pads
- Attractive graphic design
- Adjustable buckles and strap
- Tested buoyancy
- Durable, auto-lock zipper with flap protection when closed
- Hanging card
- Weight capacity: S/M 11-18 kg (24-40 lbs); M/L 18-30 kg (40-66 lbs)
- 4 units in S/M size; 2 units in M/L size
- 6 Ea., 1.9 kg (4.2 lbs)

1/3+

S/M

3/6+

M/L



93525

Fabric Arm Floats

- S/M Size: 38 cm x 14 cm / 15" x 6"
- M/L Size: 38 cm x 16.5 cm / 15" x 7"
- Comfortable knitted fabric
- Attractive graphic design
- Adjustable strap
- Tested buoyancy
- Full color box
- Weight capacity: S/M 11-18 kg (24-40 lbs); M/L 18-30 kg (40-66 lbs)
- 16 units in S/M size; 8 units in M/L size
- 24 Prs. 6.1 kg (13.5 lbs)

1/3+

S/M

3/6+

M/L





93501

3-Ring Ball Pit Play Pool

- 91 cm x 25 cm / 36" x 10"
- 3 equal rings with 3 different colors
- Colorful character images on the floor
- Repair patch
- Full color box
- Designed water capacity: 88 L (23 gal.)
- 2 Ea., 2.4 kg (5.4 lbs)



Built With 3 Equal Inflatable Rings!



93506

Lil' Learner School Bus

- 1.37 m x 96 cm x 96 cm / 54" x 38" x 38"
- Steering wheel with built-in horn
- Repair patch
- Full color box
- 2 Ea., 7.6 kg (16.8 lbs)



Steering Wheel With Built-in Horn



Fun Animal Graphics





93535
Race Car Ball Pit

- 1.19 m x 79 cm x 51 cm / 47" x 31" x 20"
- Safety valves
- Repair patch
- Full color box
- 2 Ea., 3.9 kg (8.6 lbs)



25 Balls
Included



93537
Train Ball Pit

- 1.32 m x 94 cm x 89 cm / 52" x 37" x 35"
- Built with a removable inflatable front for children to enter and exit and a train horn that makes a special sound!
- Repair patch
- Full color box
- 2 Ea., 6.1 kg (13.4 lbs)



25 Balls
Included



**Squeeze
Horn For a Special
Sound!**



Secret Door





93538
Helicopter Ball Pit

- 1.55 m x 1.02 m x 91 cm / 61" x 40" x 36"
- Helicopter shaped ball pit
- Repair patch
- Full color box
- 4 Ea., 10.9 kg (24.0 lbs)



2+



25 Balls Included



Spinning Helicopter Propeller

93542
Jumptacular Bouncer

- 1.75 m x 1.73 m x 1.14 m / 69" x 68" x 45"
- Built-in ball hoop & maze
- Mesh walls for visibility
- Full color box
- 1 Ea., 8.8 kg (19.4 lbs)



3+



25 Balls Included



Built-in Hoop



Ball Maze



Interactive Wall

93541
Animal Friends Ball Pit

- 89 cm x 89 cm x 84 cm / 35" x 35" x 33"
- Interactive ball slots
- Full color box
- 6 Ea., 7.4 kg (16.3 lbs)



93536

Bouncetastic Bouncer

- 1.75 m x 1.73 m x 1.35 m / 69" x 68" x 53"
- Jump, hop, and leap into the bouncetastic bouncer!
- Removable sidewalls for custom play
- Heavy-duty repair patch
- Full color box
- Weight capacity: 85 kg (188 lbs)
- 1 Ea., 9.2 kg (20.2 lbs)



Removable Side Walls!



Durable Bouncing Fun!



93533

Bouncesational Bouncer

- 1.75 m x 1.73 m x 1.35 m / 69" x 68" x 53"
- Built-in 220-240V~ electric air pump
- Solid walls are not removable – this is to keep children safe
- Only a door is available for children to enter and exit
- Heavy-duty repair patch
- Full color box
- Weight capacity: 85 kg (188 lbs)
- 1 Ea., 10.9 kg (24.1 lbs)



Durable Bouncing Fun!



Built-In Electric Pump Inflates In Just 4 Minutes!

93549

Bouncetacular Bouncer

- 2.00 m x 1.70 m x 1.52 m / 6'7" x 5'7" x 5'
- Includes 1 bouncer, 1 blower, 1 repair kit (multiple assorted patches), 1 storage bag, 2 blower stakes, 9 bouncer stakes
- Made of a durable and colorful PVC coated polyester material
- The heavy duty blower inflates the bouncer in less than 2 minutes
- Designed for outdoor & indoor use
- Mesh walls for safety and visibility for parents
- Fixed entryway for safety
- Huge surface area for bouncing
- Max. weight capacity: 113 kg (250 lbs)
- Individual weight capacity: 45 kg (100 lbs)
- User capacity: 3 people
- Full color box
- 1 Ea., 13.3 kg (29.2 lbs)



**Inflates
In Less Than
2 Minutes!**



93548

Girls' Dream Glimmers Comfort Airbed

- 1.32 m x 76 cm x 46 cm / 52" x 30" x 18"
- Flocked sleeping surface
- Inflatable backrest for extra comfort
- Multi-color alternating lights
- Use 3 x LR03/AAA Cell size batteries (batteries not included)
- Heavy-duty repair patch
- Full color box
- Weight capacity: 50 kg (110 lbs)
- 6 Ea., 12.4 kg (27.3 lbs)



93546

Boys' Dream Glimmers Comfort Airbed

- 1.32 m x 76 cm x 46 cm / 52" x 30" x 18"
- Flocked sleeping surface
- Inflatable backrest for extra comfort
- Multi-color alternating lights
- Use 3 x LR03/AAA Cell size batteries (batteries not included)
- Heavy-duty repair patch
- Full color box
- Weight capacity: 50 kg (110 lbs)
- 6 Ea., 12.4 kg (27.3 lbs)





Disney Junior

MICKEY AND THE ROADSTER RACERS

Disney Junior

MICKEY AND THE ROADSTER RACERS

91004 Swim Ring

- 56 cm / 22"
- Full color box
- 36 Ea., 5.5 kg (12.2 lbs)

3/6+



91002 Armbands

- 23 cm x 15 cm / 9" x 6"
- 2 air chambers
- 2 assorted designs
- Full color box
- 36 Prs., 4.6 kg (10.2 lbs)

3/6+



91030 Swim Vest

- 51 cm x 46 cm / 20" x 18"
- 2 quick release adjustable buckles
- Inflatable collar
- Full color box
- 24 Ea., 7.3 kg (16.1 lbs)

3/6+



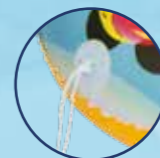
Inflatable Collar



91003 Kiddie Boat

- 1.02 m x 69 cm / 40" x 27"
- Inflatable bottom for extra comfort
- Tow rope with built-in grommet
- See-thru window
- Full color box
- 24 Ea., 9.8 kg (21.5 lbs)

3/6+



Tow Rope With Built-in Grommet



See-thru Window



Inflatable Bottom!



26

27



© Disney



Disney Junior
MICKEY
 AND THE
ROADSTER RACERS

28



91018
Baby Pool

- 70 cm x 30 cm / 27.5" x 12"
- 3 equal rings
- Repair patch
- Full color box
- Designed water capacity: 38 L (10 gal.)
- 12 Ea., 6.3 kg (13.8 lbs)

2+



91007
3-Ring Pool

- 1.22 m x 25 cm / 48" x 10"
- 3 equal rings
- Repair patch
- Full color box
- Designed water capacity: 140 L (40 gal.)
- 12 Ea., 10.5 kg (23.2 lbs)

2+

29



© Disney



Disney Junior
MICKEY AND THE ROADSTER RACERS

91008

Family Pool

- 2.62 m x 1.75 m x 51 cm / 103" x 69" x 20"
- Two Interlocking quick release valves
- 2 equal rings
- Extra wide side walls
- Releases pool water with the easy-to-use drain valve!
- Heavy-duty repair patch
- Full color box
- Designed water capacity: 778 L (206 gal.)
- 2 Ea., 9.8 kg (21.7 lbs)



3+



Extra Wide Side Walls!



91015

Gearwheel Play Center

- 1.57 m x 1.57 m x 94 cm / 62" x 62" x 37"
- Includes 4 inflatable rings
- Includes 6 play balls
- Inflatable ramp for ball rolling
- Repair patch
- Full color box
- Designed water capacity: 151 L (40 gal.)
- 4 Ea., 11.3 kg (24.9 lbs)



6 Balls Included



Gears Included



Inflatable Rail For Ball Rolling!



© Disney



MINNIE





91038 Armbands

- 25 cm x 15 cm / 10" x 6"
- 2 air chambers
- Full color box
- 36 Prs., 4.9 kg (10.8 lbs)

3/6+



91040 Swim Ring

- 56 cm / 22"
- Full color box
- 36 Ea., 5.5 kg (12.0 lbs)

3/6+



91070 Swim Vest

- 51 cm x 46 cm / 20" x 18"
- 2 quick release adjustable buckles
- Inflatable collar
- Full color box
- 24 Ea., 7.2 kg (15.9 lbs)

3/6+



Inflatable Collar!



91083 Beach Boat

- 1.12 m x 71 cm / 44" x 28"
- Inflatable bottom for extra comfort
- Tow rope with built-in grommet
- See-thru window
- Full color box
- 12 Ea., 5.6 kg (12.4 lbs)

New

3/6+



See-thru Window



Inflatable Bottom For Extra Comfort!





91079
3-Ring Pool

- 1.22 m X 25 cm / 48" X 10"
- Walls made up of 3 equal rings
- Playful Minnie Mouse graphics
- Repair patch
- Full color box
- Designed water capacity: 140 L (40 gal.)
- 12 Ea., 10.5 kg (23.2 lbs)

New

2+



Disney
MINNIE
MOUSE





91081
Disney Fashion Flamingo

- 1.73 m x 1.70 m / 68" x 67"
- Heavy-duty handles
- Tropical Minnie Mouse graphics
- Repair patch
- Full color box
- Weight capacity: 90 kg (198 lbs)
- 3 Ea., 9.6 kg (21.2 lbs)



91082
Disney Fashion Toucan

- 2.07 m x 1.50 m / 6'9" x 59"
- Heavy-duty handles
- Tropical Minnie Mouse graphics
- Repair patch
- Full color box
- Weight capacity: 90 kg (198 lbs)
- 3 Ea., 8.0 kg (17.6 lbs)



Disney
**MINNIE
MOUSE**



91080
Disney Fashion Island

- 1.58 m / 62"
- Wraparound grab rope with built-in grommets
- Tropical Minnie Mouse graphics
- Repair patch
- Full color box
- Weight capacity: 90 kg (198 lbs)
- 4 Ea., 8.4 kg (9.8 lbs)







Characters on the Beach Ball

91042

Beach Ball

- 51 cm / 20"
- Full color box
- 36 Ea., 4.8 kg (10.5 lbs)

2+



91041

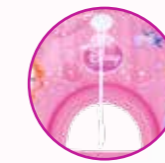
Armbands

- 23 cm x 15 cm / 9" x 6"
- 2 air chambers
- Full color box
- 36 Prs., 4.5 kg (9.9 lbs)

3/6+



Inflatable Bottom For Extra Comfort



Tow Rope With Built-in Grommet

91044

Beach Boat

- 1.02 m x 69 cm / 40" x 27"
- Inflatable bottom for extra comfort
- Tow rope with built-in grommet
- See-thru window
- Full color box
- 24 Ea., 9.7 kg (21.5 lbs)

3/6+



91043

Swim Ring

- 56 cm / 22"
- Full color box
- 36 Ea., 5.5 kg (12.0 lbs)

3/6+

44

45



91047

3-Ring Pool

- 1.22 m x 25 cm / 48" x 10"
- 3 equal rings
- Repair patch
- Full color box
- Designed water capacity: 140 L (40 gal.)
- 12 Ea., 10.5 kg (23.2 lbs)

2+

91056

Family Pool

- 2.01 m x 1.50 m x 51 cm / 79" x 59" x 20"
- Two Interlocking quick release valves
- Extra wide side walls
- 2 equal rings
- Releases pool water with the easy-to-use drain valve!
- Heavy-duty repair patch
- Full color box
- Designed water capacity: 450 L (119 gal.)
- 3 Ea., 10.1 kg (22.3 lbs)

6+



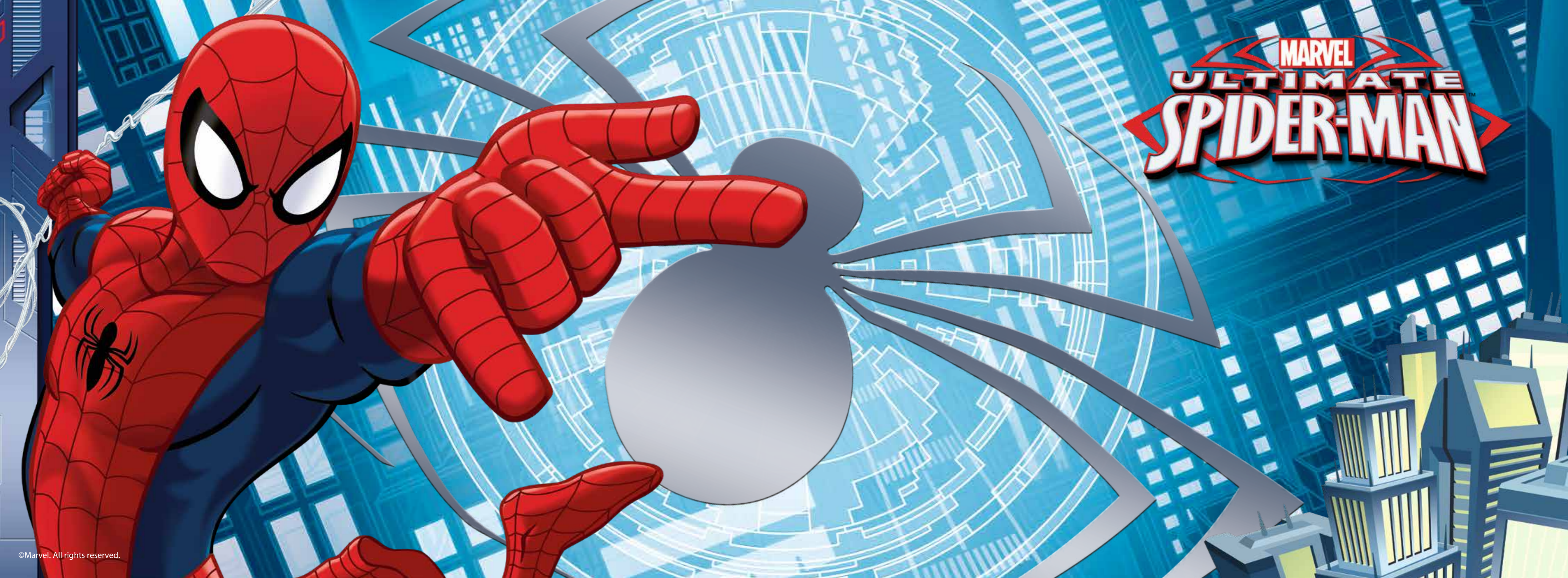
Extra Wide Side Walls!



46



47



MARVEL
ULTIMATE
SPIDER-MAN



50



**98003
Swim Ring**

- 56 cm / 22"
- Full color box
- 36 Ea., 5.5 kg (12.0 lbs)

3/6+



**98001
Armbands**

- 23 cm x 15 cm / 9" x 6"
- 2 air chambers
- Full color box
- 36 Prs., 4.5 kg (9.9 lbs)

3/6+



**98002
Beach Ball**

- 51 cm / 20"
- Full color box
- 36 Ea., 4.8 kg (10.5 lbs)

2+



Characters on the Beach Ball



See-thru Window



Inflatable Backrest



Steering Wheel With Built-In Horn



**98009
Beach Boat**

- 1.12 m x 71 cm / 44" x 28"
- Inflatable bottom for extra comfort
- Inflatable backrest
- Steering wheel with built-in horn
- See-thru window
- Full color box
- 8 Ea., 5.7 kg (12.5 lbs)

3/6+



Inflatable Collar!



**98014
Swim Vest**

- 51 cm x 46 cm / 20" x 18"
- 2 quick release adjustable buckles
- Inflatable collar
- Full color box
- 24 Ea., 7.2 kg (15.9 lbs)

3/6+



51



98011 Family Play Pool

- 2.01 m x 1.50 m x 51 cm / 79" x 59" x 20"
- Two Interlocking quick release valves
- 2 equal rings
- Extra wide side walls
- Releases pool water with the easy-to-use drain valve!
- Heavy-duty repair patch
- Full color box
- Designed water capacity: 450 L (119 gal.)
- 3 Ea., 10.1 kg (22.2 lbs)



Extra Wide
Side Walls!

6+



98018 3-Ring Pool

- 1.22 m x 30 cm / 48" x 12"
- 3 equal rings
- Repair patch
- Full color box
- Designed water capacity: 200 L (53 gal.)
- 12 Ea., 12.2 kg (26.9 lbs)

2+

52

53





Index

91002	ARMBANDS	P 26
91003	KIDDIE BOAT	P 27
91004	SWIM RING	P 26
91007	3-RING POOL	P 29
91008	FAMILY POOL	P 30
91015	GEARWHEEL PLAY CENTER	P 31
91018	BABY POOL	P 28
91030	SWIM VEST	P 27
91038	ARMBANDS	P 34
91040	SWIM RING	P 34
91041	ARMBANDS	P 44
91042	BEACH BALL	P 44
91043	SWIM RING	P 45
91044	BEACH BOAT	P 45
91047	3-RING POOL	P 46
91056	FAMILY POOL	P 46
91070	SWIM VEST	P 35
91079	3-RING POOL	P 36
91080	DISNEY FASHION ISLAND	P 40
91081	DISNEY FASHION FLAMINGO	P 40
91082	DISNEY FASHION TOUCAN	P 41
91083	BEACH BOAT	P 35
93501	3-RING BALL PIT PLAY POOL	P 14
93506	LIL' LEARNER SCHOOL BUS	P 15

93508	FABRIC KICKBOARD	P 11
93521	FOAM TRAINER VEST	P 13
93522	SWIM PAL	P 12
93523	GIRLS' FLOAT SUIT	P 10
93524	BOYS' FLOAT SUIT	P 10
93525	FABRIC ARM FLOATS	P 13
93530	SWIM PAL DUMP BIN	P 12
93533	BOUNCESATIONAL BOUNCER	P 21
93535	RACE CAR BALL PIT	P 16
93536	BOUNCETASTIC BOUNCER	P 20
93537	TRAIN BALL PIT	P 17
93538	HELICOPTER BALL PIT	P 18
93541	ANIMAL FRIENDS BALL PIT	P 18
93542	JUMPTACULAR BOUNCER	P 19
93546	BOYS' DREAM GLIMMERS COMFORT AIRBED	P 23
93548	GIRLS' DREAM GLIMMERS COMFORT AIRBED	P 23
93549	BOUNCETACULAR BOUNCER	P 22
98001	ARMBANDS	P 50
98002	BEACH BALL	P 50
98003	SWIM RING	P 50
98009	BEACH BOAT	P 51
98011	FAMILY PLAY POOL	P 53
98014	SWIM VEST	P 51
98018	3-RING POOL	P 52