

2021 COLLECTION

LICENSE

SHANGHAI

Bestway Inflatables & Material Corp.
No. 208 Jin Yuan Wu Road,
Shanghai, 201812, China
Tel: 86 21 6913 5588
E-mail: info@bestwaycorp.com

HONG KONG

Bestway (Hong Kong) International Ltd.
Suite 713, 7/Floor, East Wing,
Tsim Sha Tsui Centre,
66 Mody Road, Kowloon, Hong Kong
Tel: 852 2997 7169
E-mail: info@bestwaycorp.hk

U.S.A.

Bestway (USA) Inc.
3411 E. Harbour Drive, Phoenix, Arizona
85034, United States of America
Tel: 1 480 838 3888
E-mail: info@bestwaycorp.us

EUROPE

Bestway (Europe) S.r.l.
Via Resistenza, 5
20098 San Giuliano M.se (Mi), Italy
Tel: 39 02 9884 881
E-mail: info@bestwaycorp.eu

EASTERN EUROPE

Bestway Eastern Europe Sp. z o.o.
Ul. Ekologiczna 24
05-080 Klauodyn Poland
Tel: 48 22 60 22 508
E-mail: info@bestwaycorp.pl

LATIN AMERICA

Bestway Central & South America Ltda
Salar Ascotan 1282, Parque Enea,
Pudahuel, Santiago, Chile
Tel: 562 3203 6438
E-mail: info@bestwaycorp.lat

BRAZIL

Bestway Brazil
Av Cerro Azul, 2783 Maringa - PR - Brazil
Zip Code: 87010-055
Tel: 55 44 3046 2950 / 0800 001 8400
E-mail: info@bestwaycorp.com.br

AUSTRALIA

Bestway Australia Pty Limited
Unit 2/98-104 Carnarvon St
Silverwater, NSW 2128, Australia
Tel: 61 2 9037 1388
E-mail: info@bestwaycorp.com.au

FRANCE

Bestway France Sarl
1681 route des Dolines
- Les Tairssounières - Belem
06560 VALBONNE
Tel: 33 4 97 04 92 99
E-mail: info@bestwaycorp.fr

GERMANY

Bestway Deutschland GmbH
Parkstraße 11
24534 Neumünster, Germany
Tel: 49 4321 555 05 - 0
E-mail: info@bestwaycorp.de

Bestway

f i y www.bestwaycorp.com

©2020 Bestway Inflatables & Material Corp. All rights reserved.
©™ Trademarks owned and managed by Bestway Inflatables & Material Corp.

LICENSE 2021



LICENSE

2021 COLLECTION

Bestway

Bestway



2021 CATALOG COLLECTION



VISION OUR MISSION

We create fun, lasting experiences for everyone in the world through the products and service we provide.

Happiness —
Happy Consumers,
Happy Employees,
Happy World



JIANGSU



HAIAN



NANTONG (First Stage)



NANTONG (Second Stage)



SHANGHAI



VIETNAM



Vertically integrated



Customer focused



Innovative



Sustainable



Consumer driven

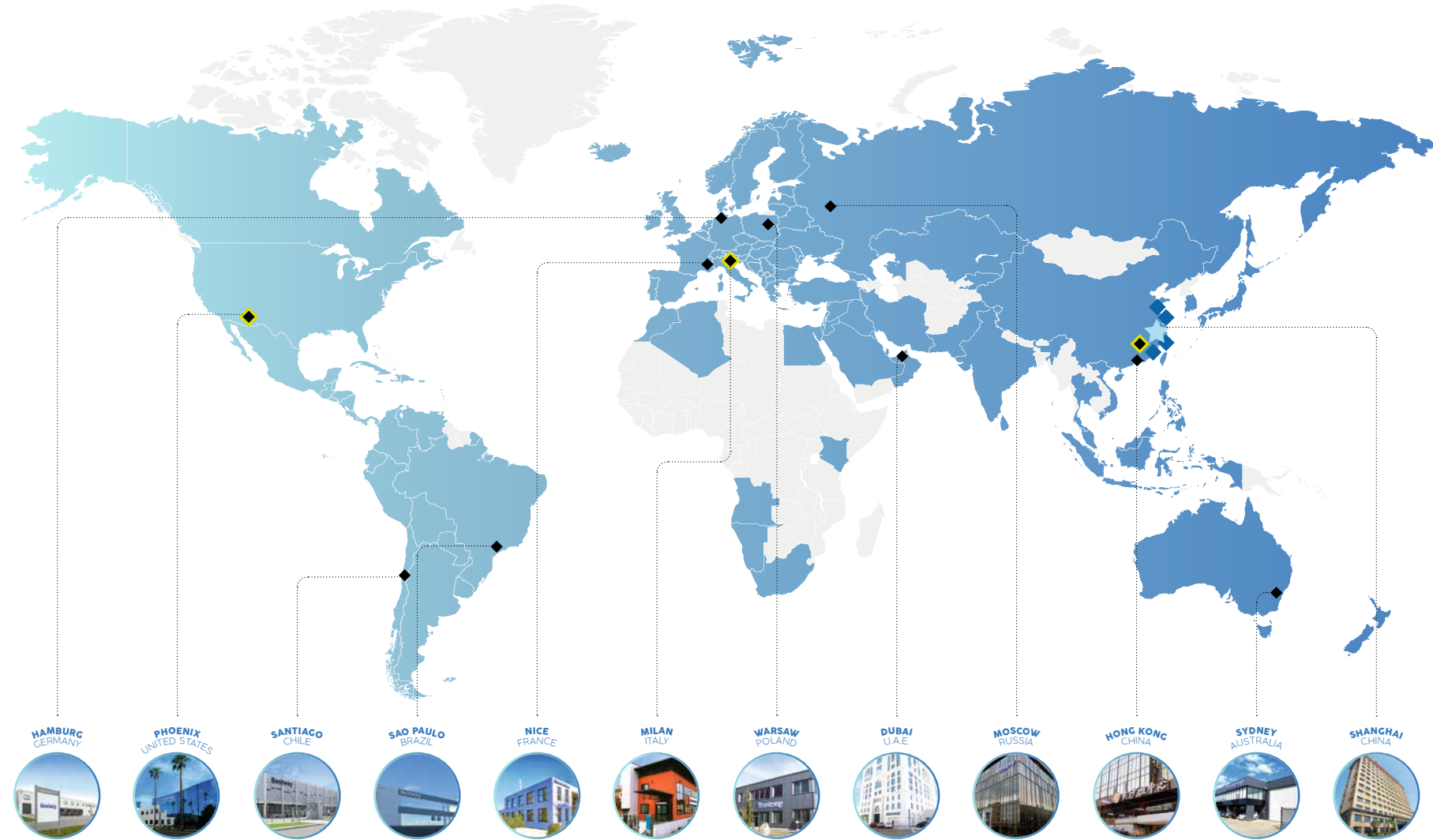


Fully owned production facilities



Public stock exchange

BESTWAY WORLD



★ HEADQUARTER

◆ R&D CENTER

◆ OVERSEAS SUBSIDIARY

◆ PRODUCTION FACILITY



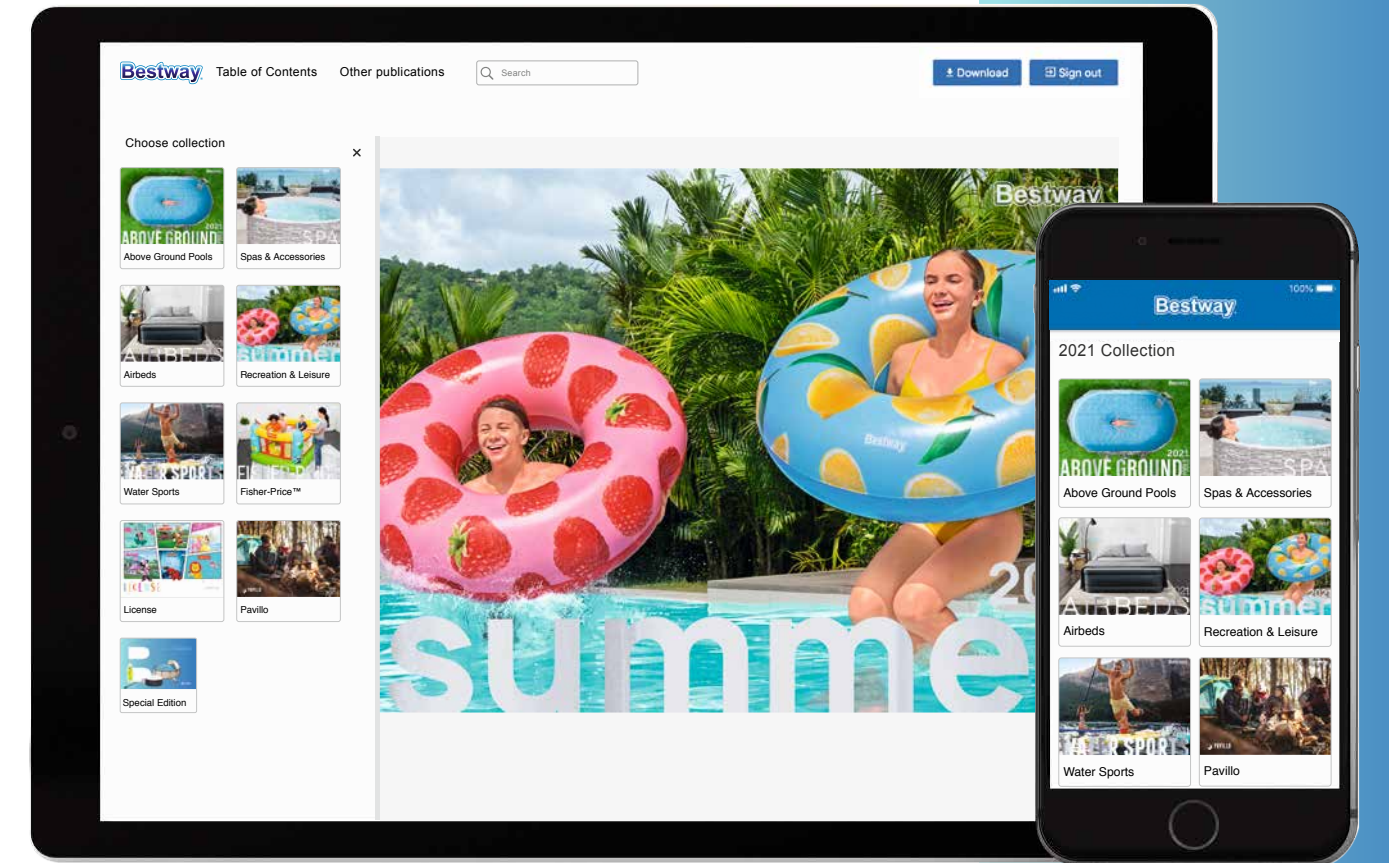
THE BESTWAY® CATALOG APP

Easily access all of our Bestway® catalogs while on the go with our brand new app. Download to see the conveniently portable, digital versions of our catalogs!

VIEW THE LATEST CATALOGS

QUICKLY FLIP THROUGH AND FIND ANY PRODUCT

REVIEW PRODUCT DETAILS AND PHOTOS



LICENSE

2021 COLLECTION

Icons



Handles



Sunshade



Play Balls



Built-in Pump



New Item



Target Age



Mesh



Blower



Multi-color Lights



New Design



9

FISHER-
PRICE



20

MIKEY
MOUSE



28

MINNIE



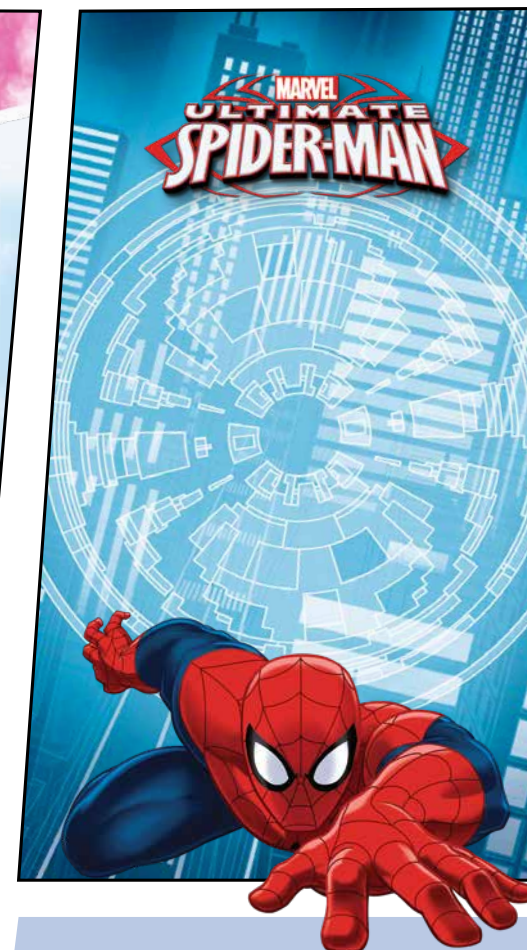
34

MINNIE
MOUSE



38

DISNEY
PRINCESS



44

SPIDER-
MAN

Let's
be
kids



fisher-price™

INDOOR &
OUTDOOR

FISHER-PRICE™ and associated trademarks are owned by Mattel and used under license from Mattel Europa B.V. © 2020 Mattel. All Rights Reserved.



93522

Swim Pal

- Chest size: 56 cm / 22"
- Innovative structure design
- Adjustable straps create a snug fit and keep kids secure
- Durable oxford fabric
- Built-in foam pads
- Attractive graphic design
- Tested buoyancy
- Hanging card
- Weight capacity: 18-30 kg (40-66 lbs)
- 8 Ea., 4.2 kg (9.3 lbs)

3/6



93530

Swim Pal Dump Bin

- 95.8 cm x 42.8 cm x 1.06 m / 37.7" x 16.9" x 41.7"
- Includes: 40 pcs (93522 Swim Pal)
- 1 Set, 21.3 kg (47.0 lbs)

3/6



93521

Foam Trainer Vest

- Chest size: 51 cm / 20"
- Vest constructed of comfortable knit fabric
- Built-in foam pads
- UPF 50+ fabric prevents color fading
- Attractive graphic design
- Adjustable buckles and strap
- Tested buoyancy
- Durable, auto-lock zipper with flap protection when closed
- Hanging card
- Weight capacity: 11-18 kg (24-40 lbs)
- 6 Ea., 1.7 kg (3.8 lbs)

1/3



93525

Fabric Arm Floats

- 38 cm x 14 cm / 15" x 6"
- Comfortable knitted fabric
- UPF 50+ fabric prevents color fading
- Attractive graphic design
- Adjustable strap
- Tested buoyancy
- Full color box
- Weight capacity: 11-18 kg (24-40 lbs)
- 24 Prs. 5.9 kg (13.1 lbs)

1/3





93535
Race Car Ball Pit

- 1.19 m x 79 cm x 51 cm / 47" x 31" x 20"
- Repair patch
- Full color box
- 2 Ea., 4.1 kg (9.0 lbs)

2+



25 Balls
Included



93537
Train Ball Pit

- 1.32 m x 94 cm x 89 cm / 52" x 37" x 35"
- Secret door
- Squeeze horn for special sound
- Enclosed play area
- Includes 25 play balls
- Repair patch
- Full color box
- 2 Ea., 6.1 kg (13.4 lbs)

2+



25 Balls
Included



Squeeze Horn
For a Special
Sound!



Secret Door

fisher-price™



93538
Helicopter Ball Pit

- 1.55 m x 1.02 m x 91 cm / 61" x 40" x 36"
- Two rotating propellers
- Repair patch
- Full color box
- 4 Ea., 10.9 kg (24.1 lbs)

2+



25 Balls Included



Spinning
Helicopter
Propeller

93541
Animal Friends Ball Pit

- 89 cm x 89 cm x 84 cm / 35" x 35" x 33"
- Interactive ball slots
- Repair patch
- Full color box
- 6 Ea., 7.4 kg (16.3 lbs)

2+



15 Balls Included



93542
Jumptacular Bouncer

- 1.75 m x 1.73 m x 1.14 m / 69" x 68" x 45"
- Built-in ball hoop & maze
- Mesh walls for visibility
- Single entryway for safety
- Weight Capacity: 85 kg (188 lbs)
- Heavy-duty repair patch
- Full color box
- 1 Ea., 8.9 kg (19.6 lbs)

3+



25 Balls Included



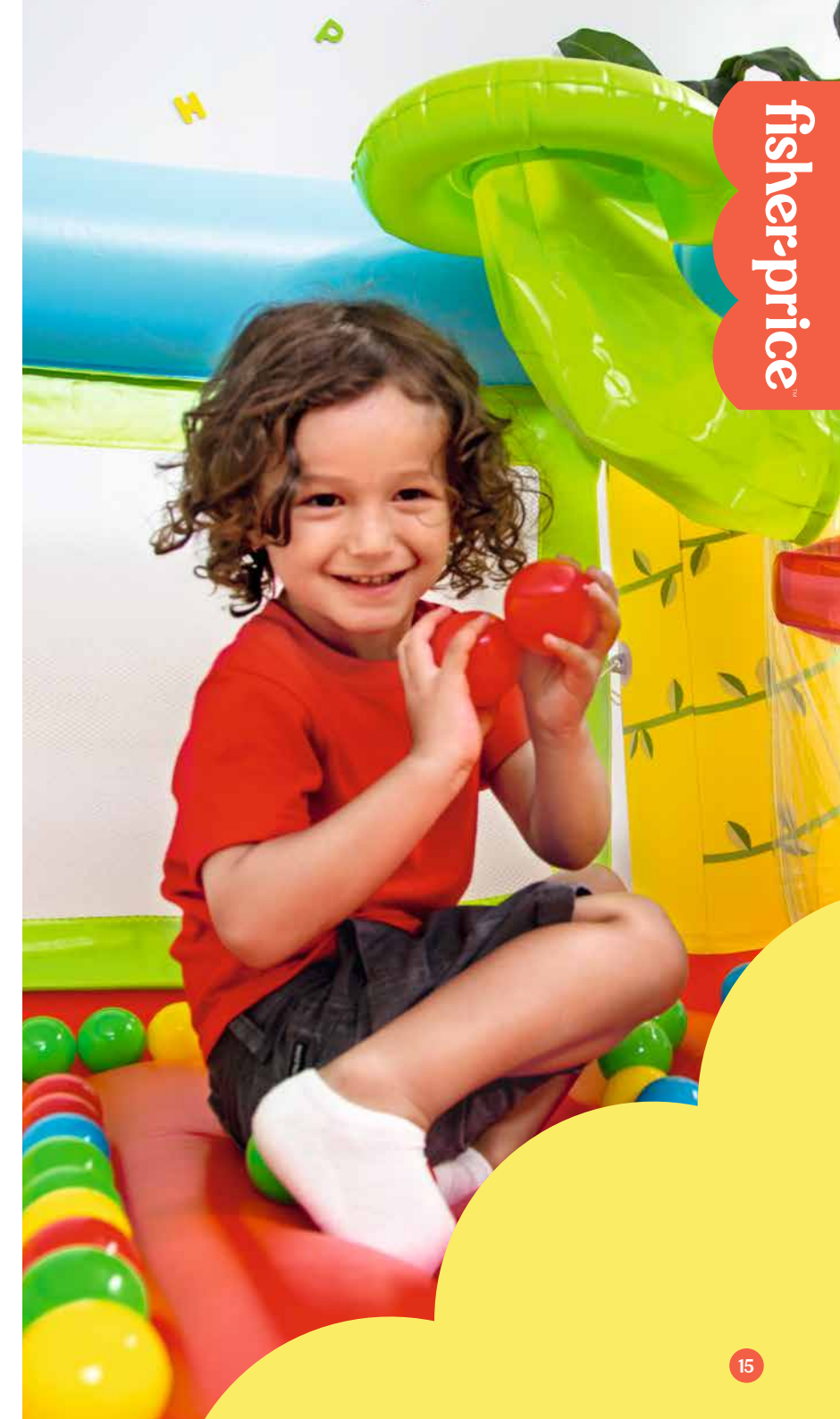
Built-in Hoop



Ball Maze



Interactive
Wall



fisher-price



93553
Bouncetastic Bouncer

- 1.75 m x 1.73 m x 1.35 m / 69" x 68" x 53"
- Mesh sidewalls for safety
- Great for indoor & outdoor use
- Develops motor skills, hand-eye coordination and dexterity
- Single entryway
- Heavy-duty repair patch
- Full color box
- Weight capacity: 85 kg (188 lbs)
- 1 Ea., 8.4 kg (18.5 lbs)

3+



Mesh
Sidewalls!



Single Entry
for Safety!



fp

93533 / 93532

Bouncetastic Bouncer

- 1.75 m x 1.73 m x 1.35 m / 69" x 68" x 53"
- Solid walls are not removable – this is to keep children safe
- Only a door is available for children to enter and exit
- Heavy-duty repair patch
- Full color box
- Weight capacity: 85 kg (188 lbs)

Built-in 220-240V~ electric air pump [93533]
▪ 1 Ea., 11.1 kg (24.4 lbs)

Built-in 110-120V~ electric air pump [93532]
▪ 1 Ea., 11.1 kg (24.5 lbs)

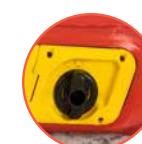
3+



50 Balls
Included



93533



93532

**Built-In Electric Pump
Inflates In Just 4 Minutes!**



**Durable
Bouncing Fun!**



fisher-price



93549 / 93544
Bouncetacular Bouncer

- 2.00 m x 1.70 m x 1.52 m / 6'7" x 5'7" x 5'
- Includes 1 bouncer, 1 blower, 1 repair kit (multiple assorted patches), 1 storage bag, 2 blower stakes, 9 bouncer stakes
- Made of a durable and colorful PVC coated polyester material
- The heavy duty blower inflates the bouncer in less than 2 minutes
- Designed for outdoor & indoor use
- Mesh walls for safety and visibility for parents
- Fixed entryway for safety
- Huge surface area for bouncing
- Max. weight capacity: 113 kg (250 lbs)
- Individual weight capacity: 45 kg (100 lbs)
- User capacity: 3 people
- Full color box

- 220-240V~ Blower [93549]
- 1 Ea., 13.3 kg (29.2 lbs)

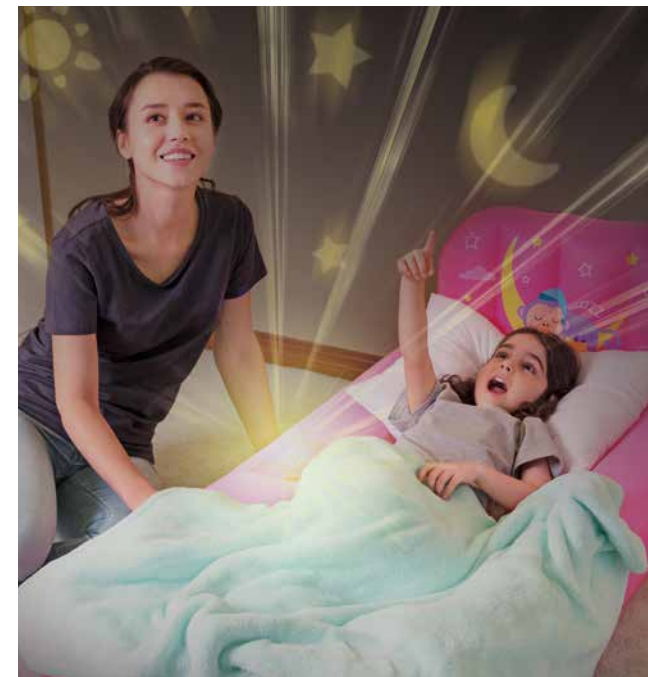
- 110-120V~ Blower [93544]
- 1 Ea., 13.7 kg (30.3 lbs)



93549

93544

**Inflates In Less
Than 2 Minutes!**



93548
Girls' Dream Glimmers Comfort Airbed

- 1.32 m x 76 cm x 46 cm / 52" x 30" x 18"
- Flocked sleeping surface
- Inflatable backrest for extra comfort
- Multi-color alternating lights
- Use 3 x LR03/AAA Cell size batteries (batteries not included)
- Heavy-duty repair patch
- Full color box
- Weight capacity: 50 kg (110 lbs)
- 6 Ea., 12.4 kg (27.3 lbs)



93546
Boys' Dream Glimmers Comfort Airbed

- 1.32 m x 76 cm x 46 cm / 52" x 30" x 18"
- Flocked sleeping surface
- Inflatable backrest for extra comfort
- Multi-color alternating lights
- Use 3 x LR03/AAA Cell size batteries (batteries not included)
- Heavy-duty repair patch
- Full color box
- Weight capacity: 50 kg (110 lbs)
- 6 Ea., 12.4 kg (27.3 lbs)





Disney Junior

MICKEY AND THE ROADSTER RACERS

Disney Junior MICKEY AND THE ROADSTER RACERS

91002 Armbands

- 23 cm x 15 cm / 9" x 6"
- Two air chambers
- Two assorted designs
- Full color box
- 36 Prs., 4.4 kg (9.8 lbs)

3/6



91004 Swim Ring

- 56 cm / 22"
- Full color box
- 36 Ea., 5.3 kg (11.7 lbs)

3/6



91030 Swim Vest

- 51 cm x 46 cm / 20" x 18"
- Two quick release adjustable buckles
- Inflatable collar
- Full color box
- 24 Ea., 7.2 kg (15.8 lbs)

3/6



Inflatable Collar



91003 Kiddie Boat

- 1.02 m x 69 cm / 40" x 27"
- Inflatable bottom for extra comfort
- Tow rope with built-in grommet
- See-thru window
- Full color box
- 24 Ea., 9.8 kg (21.5 lbs)

3/6



Tow Rope With Built-in Grommet



See-thru Window



Inflatable Bottom

MICKEY AND THE ROADSTER RACERS

24



91018
Baby Pool

- 70 cm x 30 cm / 27.5" x 12"
- 3 equal rings
- Repair patch
- Full color box
- Water capacity: 38 L (10 gal.)
- 12 Ea., 6.2 kg (13.6 lbs)

2+



91007
3-Ring Pool

- 1.22 m x 25 cm / 48" x 10"
- 3 equal rings
- Repair patch
- Full color box
- Water capacity: 140 L (40 gal.)
- 12 Ea., 10.6 kg (23.4 lbs)

2+



25



91008

Family Pool

- 2.62 m x 1.75 m x 51 cm / 103" x 69" x 20"
- Two interlocking quick release valves
- 2 equal rings
- Extra wide side walls
- Releases pool water with the easy-to-use drain valve!
- Heavy-duty repair patch
- Full color box
- Water capacity: 778 L (206 gal.)
- 2 Ea., 9.5 kg (20.9 lbs)

3+



Extra Wide
Side Walls!



91015

Gearwheel Play Center

- 1.57 m x 1.57 m x 94 cm / 62" x 62" x 37"
- Includes 4 inflatable rings
- Includes 6 play balls
- Inflatable ramp for ball rolling
- Repair patch
- Full color box
- Water capacity: 151 L (40 gal.)
- 4 Ea., 11.3 kg (24.9 lbs)

2+



6 Balls
Included



Gears Included



Inflatable Ramp
For Ball Rolling!



© Disney





MINNIE



**91038
Armbands**

- 25 cm x 15 cm / 10" x 6"
- 2 air chambers
- Full color box
- 36 Prs., 4.8 kg (10.5 lbs)

3/6



**91040
Swim Ring**

- 56 cm / 22"
- Full color box
- 36 Ea., 5.3 kg (11.7 lbs)

3/6



**91070
Swim Vest**

- 51 cm x 46 cm / 20" x 18"
- 2 quick release adjustable buckles
- Inflatable collar
- Full color box
- 24 Ea., 7.2 kg (15.8 lbs)

3/6



Inflatable Collar!



**91083
Beach Boat**

- 1.12 m x 71 cm / 44" x 28"
- Two air chambers
- Inflatable bottom for extra comfort
- Tow rope with built-in grommet
- See-thru window
- Full color box
- 12 Ea., 5.6 kg (12.4 lbs)

3/6



See-thru Window



Inflatable Bottom For Extra Comfort!

Disney
Junior

MINNIE

32



91079
Minnie 3-Ring Pool

- 1.22 m x 25 cm / 48" x 10"
- Walls made up of 3 equal rings
- Playful Minnie Mouse graphics
- Full color box
- Water capacity: 140 L (40 gal.)
- 12 Ea., 10.5 kg (23.1 lbs)

2+

© Disney

Disney
Junior

MINNIE

33



Disney
MINNIE
MOUSE



Disney MINNIE MOUSE

91081 Fashion Flamingo

- 1.73 m x 1.70 m / 68" x 67"
- Heavy-duty handles
- Tropical Minnie Mouse graphics
- 3 air chambers
- Full color box
- Weight capacity: 90 kg (198 lbs)
- 3 Ea., 9.4 kg (20.8 lbs)



91082 Fashion Toucan

- 2.07 m x 1.50 m / 6'9" x 59"
- Heavy-duty handles
- Tropical Minnie Mouse graphics
- 4 air chambers
- Full color box
- Weight capacity: 90 kg (198 lbs)
- 3 Ea., 7.9 kg (17.3 lbs)



Disney PRINCESS



© Disney





91042
Beach Ball

- 51 cm / 20"
- Full color box
- 36 Ea., 4.9 kg (10.7 lbs)



91041
Armbands

- 23 cm x 15 cm / 9" x 6"
- 2 air chambers
- Full color box
- 36 Prs., 4.3 kg (9.6 lbs)



91044
Beach Boat

- 1.02 m x 69 cm / 40" x 27"
- 2 air chambers
- Inflatable bottom for extra comfort
- Tow rope with built-in grommet
- Full color box
- 24 Ea., 10.0 kg (22.1 lbs)



Inflatable
Bottom
For Extra
Comfort



Tow Rope With
Built-in Grommet



91043
Swim Ring

- 56 cm / 22"
- Full color box
- 36 Ea., 5.3 kg (11.7 lbs)



Disney
PRINCESS





42



91047
3-Ring Pool

- 1.22 m x 25 cm / 48" x 10"
- 3 equal rings
- Full color box
- Water capacity: 140 L (40 gal.)
- 12 Ea., 10.7 kg (23.5 lbs)

2+



91056
Family Pool

- 2.01 m x 1.50 m x 51 cm / 79" x 59" x 20"
- Two interlocking quick release valves
- Extra wide side walls
- 2 equal rings
- Releases pool water with the easy-to-use drain valve!
- Heavy-duty repair patch
- Full color box
- Water capacity: 450 L (119 gal.)
- 3 Ea., 9.9 kg (21.9 lbs)

6+

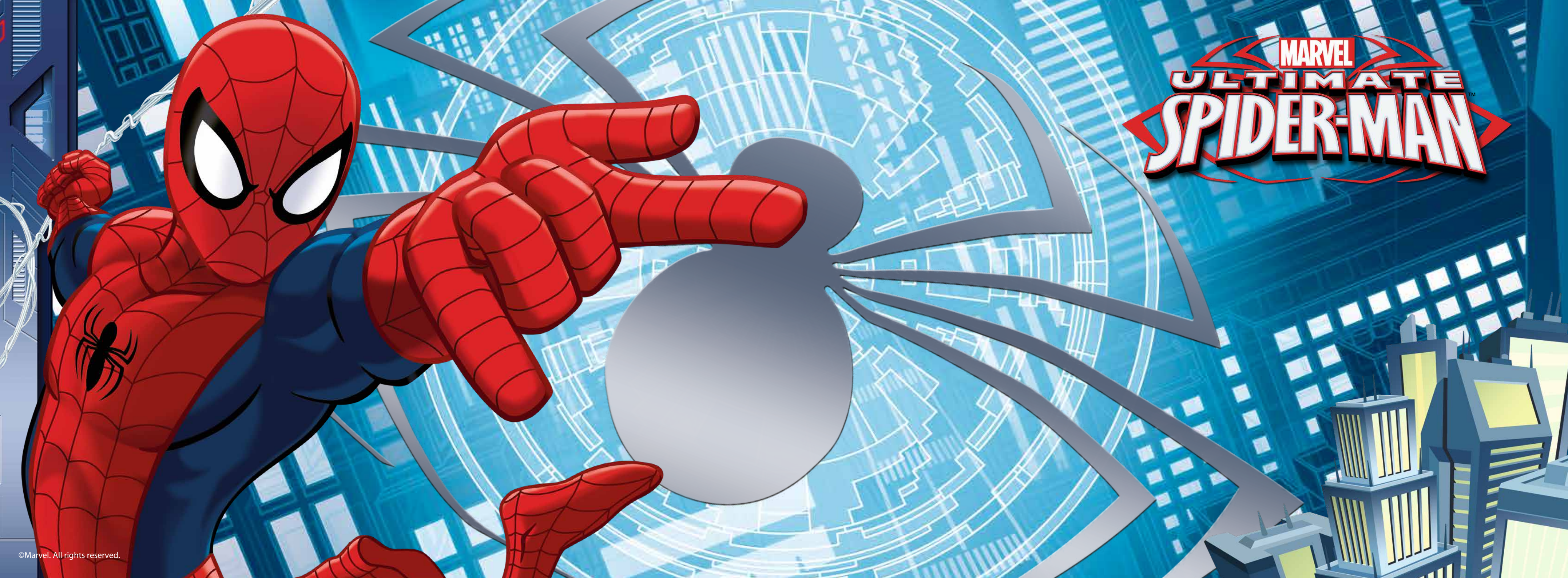


Extra Wide
Side Walls!



43

Disney
PRINCESS



MARVEL
ULTIMATE
SPIDER-MAN



46



98003 Swim Ring

- 56 cm / 22"
- Full color box
- 36 Ea., 5.3 kg (11.7 lbs)

3/6



98001 Armbands

- 23 cm x 15 cm / 9" x 6"
- 2 air chambers
- Full color box
- 36 Prs., 4.4 kg (9.8 lbs)

3/6



98002 Beach Ball

- 51 cm / 20"
- Full color box
- 36 Ea., 4.8 kg (10.6 lbs)

2+



Characters on the Beach Ball



See-thru Window



Inflatable
Backrest



Steering Wheel With
Built-In Horn



98009 Beach Boat

- 1.12 m x 71 cm / 44" x 28"
- Inflatable bottom for extra comfort
- Inflatable backrest
- Steering wheel with built-in horn
- See-thru window
- Full color box
- 8 Ea., 5.8 kg (12.8 lbs)

3/6



Inflatable
Collar



98014 Swim Vest

- 51 cm x 46 cm / 20" x 18"
- 2 quick release adjustable buckles
- Inflatable collar
- Full color box
- 24 Ea., 7.1 kg (15.7 lbs)

3/6



47



**98018
3-Ring Pool**

- 1.22 m x 30 cm / 48" x 12"
- 3 equal rings
- Repair patch
- Full color box
- Water capacity: 200 L (53 gal.)
- 12 Ea., 12.2 kg (26.9 lbs)

2+



**98011
Family Play Pool**

- 2.01 m x 1.50 m x 51 cm / 79" x 59" x 20"
- Two interlocking quick release valves
- 2 equal rings
- Extra wide side walls
- Releases pool water with the easy-to-use drain valve!
- Heavy-duty repair patch
- Full color box
- Water capacity: 450 L (119 gal.)
- 3 Ea., 9.9 kg (21.7 lbs)

6+



**Extra Wide
Side Walls!**





INDEX

91002	ARMBANDS	P 22
91003	KIDDIE BOAT	P 23
91004	SWIM RING	P 22
91007	3-RING POOL	P 25
91008	FAMILY POOL	P 26
91015	GEARWHEEL PLAY CENTER	P 27
91018	BABY POOL	P 24
91030	SWIM VEST	P 23
91038	ARMBANDS	P 30
91040	SWIM RING	P 30
91041	ARMBANDS	P 40
91042	BEACH BALL	P 40
91043	SWIM RING	P 41
91044	BEACH BOAT	P 41
91047	3-RING POOL	P 42
91056	FAMILY POOL	P 42
91070	SWIM VEST	P 31
91079	MINNIE 3-RING POOL	P 32
91081	FASHION FLAMINGO	P 36
91082	FASHION TOUCAN	P 37
91083	BEACH BOAT	P 31
93521	FOAM TRAINER VEST	P 11

93522	SWIM PAL	P 10
93525	FABRIC ARM FLOATS	P 11
93530	SWIM PAL DUMP BIN	P 10
93532	BOUNCESATIONAL BOUNCER	P 17
93533	BOUNCESATIONAL BOUNCER	P 17
93535	RACE CAR BALL PIT	P 12
93537	TRAIN BALL PIT	P 13
93538	HELICOPTER BALL PIT	P 14
93541	ANIMAL FRIENDS BALL PIT	P 14
93542	JUMPTACULAR BOUNCER	P 15
93544	BOUNCETACULAR BOUNCER	P 18
93546	BOYS' DREAM GLIMMERS COMFORT AIRBED	P 19
93548	GIRLS' DREAM GLIMMERS COMFORT AIRBED	P 19
93549	BOUNCETACULAR BOUNCER	P 18
93553	BOUNCETASTIC BOUNCER	P 16
98001	ARMBANDS	P 46
98002	BEACH BALL	P 46
98003	SWIM RING	P 46
98009	BEACH BOAT	P 47
98011	FAMILY PLAY POOL	P 49
98014	SWIM VEST	P 47
98018	3-RING POOL	P 48